

# THE BOROUGH OF BRADLEY BEACH 2012 MUNICIPAL CALENDAR

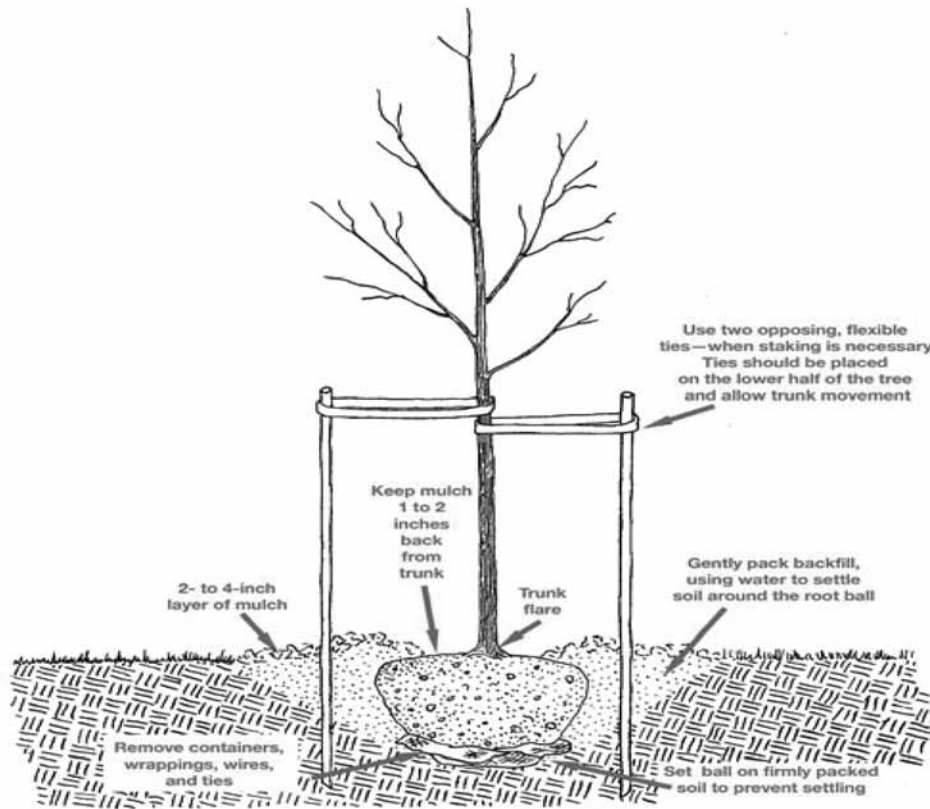


Photograph Taken By: Michele Mortimer-Whille

# January 2012

Sun	Mon	Tue	Wed	Thu	Fri	Sat
1	2 <i>New Years Day Boro Offices Closed</i>	3 <i>Dog Licenses Due</i>	4	5 <i>Municipal Court 9am Joint Sub Committee 6:30pm</i>	6	7
8	9	10 <i>Council 6:30pm</i>	11 <i>Fletcher Lake Commission 7pm Neighborhood Watch 7pm</i>	12 <i>Dream Big at Public Library 6pm</i>	13	14
15	16 <i>Martin Luther Kings Birthday Boro Offices Closed Shade Tree Commission 7pm Rec. Board 7pm</i>	17	18	19 <i>Municipal Court 9am Zoning Board 6:30pm</i>	20	21
22	23 <i>Library Board 5:15pm</i>	24 <i>Council 6:30pm</i>	25 <i>Sylvan Lake Commission 7:00pm</i>	26 <i>Planning Board 6:30pm</i>	27	28 <i>Free Rabies Clinic Fire House 2pm-4pm Dog Licenses available.</i>
29	30	31				

**Healthy Trees, Healthy Town!**  
**SHADE TREE COMMISSION INFORMATION**



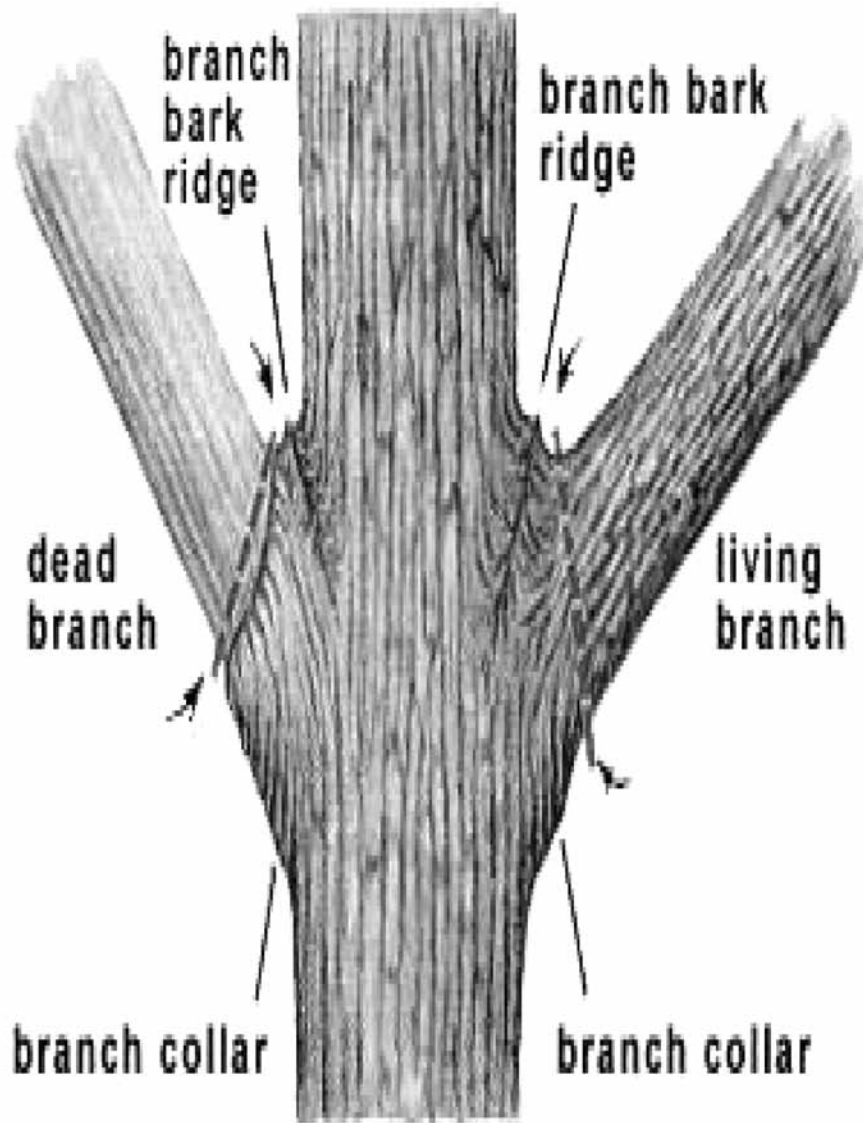
**Summer** - May or June-Mulch can be applied any time of the year. However, the best time to mulch is late spring after the soil has warmed. Early spring application will delay soil warming and possibly plant growth. Cover the planting hole with 1-3 inches (2.5 cm - 7.6 cm) of shredded hardwood or leaf mulch. Keep the mulch 2-3" away from the trunk or the trunk will rot. Don't over-mulch the tree, either. A few inches are enough to keep water in and most weeds out. Mulch a circle out to the drip line, about the same width as the tree's leaves. A visible patch of mulch also helps remind people not to step or mow or run a string trimmer (weed whacker) too close to the tree.

**Pruning**

**Winter** - Best time to prune large trees. Trees are dormant and the tree structure is more visible. Branches and stems are separated by a lip of tissue called a branch collar which grows out from the stem at the base of the branch. All pruning cuts should be made on the branch side of this stem collar. This protects the stem and the other branches that might be growing from it. It also allows the tree to heal more effectively after the prune.

# February 2012

Sun	Mon	Tue	Wed	Thu	Fri	Sat
			1	2 <i>Property Tax and Sewer Payments Due Joint Sub Committee 6:30pm</i>	3	4
5	6	7	8 <i>Fletcher Lake Commission 7pm</i>	9 <i>Municipal Court 9am  Valentine Day Party 6pm Public Library</i>	10	11
12	13	14 <i>Council 6:30pm</i>	15	16 <i>Zoning Board 6:30pm</i>	17	18
19	20 <b><i>Presidents Day Boro Offices Closed Shade Tree Commission 7pm Rec. Board 7pm</i></b>	21	22	23 <i>Municipal Court 9am  Planning Board 6:30pm</i>	24	25
26	27 <i>Library Board 5:15pm</i>	28 <i>Council 6:30pm</i>	29 <i>Sylvan Lake Commission 7:00pm</i>			



### Street Trees for Bradley Beach

Botanical Name	Common Name(s)	Height (feet)
<b>For Planting Strips Less than 30 inches:</b>		
<i>Acer campestre</i>	Hedge Maple	25
<i>Prunus cerasifera</i> 'Newport'	'Newport' Purpleleaf Plum *	20
<i>Oxydendrum arboreum</i>	Sourwood *	35
<b>For Planting Strips Between 30 and 48 inches:</b>		
<i>Maackia amurensis</i>	Amur Maackia	15-20
<i>Acer ginnala</i>	Amur Maple	15
<i>Syringa reticulata</i> 'Ivory Silk'	'Ivory Silk' Japanese Lilac Tree	25
<i>Pyrus calleryana</i> 'Redspire'	'Redspire' Callery Pear	35
<i>Pyrus calleryana</i> 'Aristocrat'	'Aristocrat' Callery Pear	35
<i>Pyrus calleryana</i> 'Chanticleer'	'Chanticleer' Callery Pear	35
<i>Acer tataricum</i>	Tatarian Maple	25
<b>For Planting Strips Wider than 48 inches:</b>		
<i>Carpinus caroliniana</i>	American Hornbeam	25-50
<i>Carpinus betulus</i> 'Fastigiata'	'Fastigiata' European Hornbeam	30-40
<i>Koelreuteria paniculata</i> 'Fastigiata'	'Fastigiata' Goldenrain Tree	25-30
<i>Celtis occidentalis</i>	Common Hackberry	60
<i>Prunus subhirtella</i> 'Pendula'	Weeping Higan Cherry	25-50
<i>Gleditsia triacanthos inermis</i>	Thornless Honeylocust	40
<i>Tilia cordata</i>	Little Leaf Linden	50-75
<i>Morus Rubra</i>	American or Mulberry (male only)	50
<i>Liriodendron tulipifera</i>	Tuliptree Magnolia, Tulip Poplar, Yellow Poplar	80
<i>Acer rubrum</i>	Red Maple (Smaller height)	60
<i>Acer saccharum</i>	Sugar Maple	60
<i>Tilia tomentosa</i>	Silver Linden	70
<i>Zelkova serrata</i>	Japanese Zelkova	60

**Notes:**

\* Best to plant in the spring

**Spring-** Prune dead or diseased branches at any time of the year, as soon as you see them, But tree pruning that is meant to thin out flowering trees is best done in the late winter or early spring.

**Spring-** The most beneficial time to apply fertilizer is from when the ground is workable in the spring until just before trees start growing in early May. On sandy soils, applications should be split, half in early spring and half in mid- to late May. Do not use weed-and-feed fertilizers under trees or shrubs unless the label says it is safe. Some plants, such as dogwoods, are very sensitive to dicamba herbicide that is contained in many weed-and-feed lawn fertilizers.

# March 2012

Sun	Mon	Tue	Wed	Thu	Fri	Sat
				<p>1 <i>Dog License final date before \$10.00 late fee</i>  <i>Joint Sub Committee 6:30pm</i>  <i>Special Park Permits Applications Due</i></p>	<p>2 <i>Dr. Suess' Birthday Celebration at Public Library 11am &amp; 3:30pm</i></p>	3
4	5	6	7	<p>8 <i>Municipal Court 9am</i></p>	9	10
<p>11 <i>Daylight Saving Time Begins</i>  <i>Check Smoke/CO Detector Batteries</i></p>	<p>12 <b>BRUSH PICK UP</b></p>	<p>13 <i>Council 6:30pm</i></p>	<p>14 <i>Fletcher Lake Commission 7pm</i>  <i>Neighborhood Watch 7pm</i></p>	<p>15 <i>Ebook Launch at Public Library 10am &amp; 6pm</i>  <i>Zoning Board 6:30pm</i></p>	16	17
18	<p>19 <i>Shade Tree Commission 7pm</i>  <i>Rec. Board 7pm</i></p>	<p>20 <i>First Day of Spring</i></p>	21	<p>22 <i>Municipal Court 9am</i>  <i>Planning Board 6:30pm</i></p>	23	<p>24 <i>BB Fire Dept. Flea Market 9am</i></p>
25	<p>26 <i>Library Board 5:15pm</i></p>	<p>27 <i>Council 6:30pm</i></p>	<p>28 <i>Sylvan Lake Commission 7:00pm</i></p>	29	<p>30 <i>BBFD Fish Fry Fire House 5pm—8pm</i></p>	<p>31 <i>Easter Egg Hunt 1pm 2nd Ave Beach</i></p>

**BEACH INFORMATION  
BRADLEY BEACH POLICE DEPARTMENT REMINDERS**

Smoking is not permitted on the beach year round, except in designated areas.

No dogs are permitted on the East side of Ocean Avenue year round. Dogs are permitted on the beach from September 16th - April 30th.

No dogs on the Beach from May 1st - September 15th.

Parking meters are in effect 8:00am - 7:00pm from the weekend before Memorial Day through the Sunday After Labor Day.

25 MPH Speed Limit Ocean Avenue April 15th - October 15th

35 MPH Speed Limit Ocean Avenue October 16th - April 14th

**LIFE GUARD STATION AND DAILY TIDE INFORMATION**

732-776-2990 *OR* 732-776-2992

**SEASON BADGE INFORMATION AND QUESTIONS**

TAG BOOTHS (IN SEASON)

THIRD AVENUE 732-776-2994

CLIFF AVENUE 732-776-2991

MINIATURE GOLF COURSE 732-776-2404

**CERTIFICATE OF OCCUPANCY**

No person shall occupy, rent, lease, sell, transfer title or permit the occupancy, letting or sale, or allow any person to live in or upon or inhabit as a tenant or occupant or to occupy as any new owner or co-tenant or co-owner any dwelling house or dwelling unit or any portion of a premises occupied for a separate and distinct commercial use within the confines of the Borough unless such person first obtains from the Code Enforcement Officer of the Borough a certificate of occupancy and permit authorizing any of the foregoing and when any of the foregoing shall take place.

The certificate of occupancy for residential rental units shall be for a term of three years or until the change of ownership of the property or a change in the tenant of the property, whichever event is sooner.

# April 2012

Sun	Mon	Tue	Wed	Thu	Fri	Sat
1	2 <i>LEAF PICK UP STARTS Beach Locker Renewal Deadline</i>	3	4	5 <i>Joint Sub Committee 6:30pm</i>	6 <b>Good Friday</b> <i>Boro Offices Closed</i>	7 <i>Easter Egg Hunt (Rain Date)</i>
8	9 <b>BRUSH PICK UP</b>	10 <i>Council 6:30pm</i>	11 <i>Fletcher Lake Commission 7pm</i>	12	13	14
15	16 <i>Shade Tree Commission 7pm Rec. Board 7pm</i>	17 <i>School Board Election 4pm—9pm</i>	18	19 <i>Municipal Court 9am  Zoning Board 6:30pm</i>	20	21
22	23 <b>BRUSH PICK UP</b>  <i>Summer Camp Apps. Available  Library Board 5:15pm</i>	24 <i>Council 6:30pm</i>	25 <i>Sylvan Lake Commission 7:00pm</i>	26 <i>Poetry Night at the Public Library 6:00pm  Planning Board 6:30pm</i>	27	28 <i>Fletcher Lake Clean Up</i>
29	30					

## **ELECTION REGISTRATION INFORMATION**

Please visit our website: [www.bradleybeachonline.com](http://www.bradleybeachonline.com) and go to “Resident” tab, forms and click on the link for Monmouth County Voter Registration. The form is mailed directly to Monmouth County Commissioner of Registration. **Deadline to register is 21 days before an election.**

**REQUIREMENTS:** Must be a US Citizen, 18 years of age by next election, a resident of the State and county 30 days before the election and you are not currently serving a sentence, probation or parole because of a felony conviction.

### **BOROUGH OF BRADLEY BEACH ELECTION POLL LOCATIONS**

DISTRICTS 1 & 2 - BRADLEY BEACH FIRE HOUSE, 815 Rear Main Street

DISTRICTS 3 & 4 - CARMEN A. BIASE COMMUNITY CENTER, 719 Main Street

### **TAX AND SEWER DEPARTMENT**

Ed Mullane, Tax Assessor    Joyce Wilkins, Tax Collector

**DIRECT DEBIT IS NOW AVAILABLE FOR TAX AND SEWER PAYMENTS**

### **BRADLEY BEACH PUBLIC LIBRARY**

Janet Torsney, Director

SEPTEMBER IS LIBRARY CARD SIGN-UP MONTH

NOVEMBER IS FOOD FOR FINES MONTH

### **MUNICIPAL COURT**

**CERTAIN TRAFFIC TICKETS MAY BE PAID OVER THE STATE WEBSITE AT [www.njmcdirect.com](http://www.njmcdirect.com)**

**\*\* MEETING DATES ON CALENDAR ARE SUBJECT TO CHANGE  
PLEASE VERIFY WITH THE WEBSITE. [www.bradleybeachonline.com](http://www.bradleybeachonline.com) \*\***

# May 2012

Sun	Mon	Tue	Wed	Thu	Fri	Sat
		1 <i>Property Tax &amp; Sewer Payments Due</i>	2	3 <i>Municipal Court 9am</i>  <i>Joint Sub Committee 6:30pm</i>	4	5 <i>Tour of the Town Garage Sale 9am—3pm</i>
6 <i>Tour of the Town Garage Sale (rain date)</i>	7	8 <i>Council 6:30pm</i>	9 <i>Fletcher Lake Commission 7pm</i>  <i>Neighborhood Watch 7pm</i>	10	11	12 <i>Police Auction 8am</i>
13	14 <b>BRUSH PICK UP</b>	15	16	17 <i>Municipal Court 9am</i> <i>Historical Society Tea Party 4pm</i> <i>Zoning Board 6:30pm</i>	18	19 <i>Fletcher Lake Commission Miniature Golf Fundraiser</i>
20 <i>Fletcher Lake Commission Miniature Golf Fundraiser</i>	21 <i>Library Board 5:15pm</i>  <i>Shade Tree Commission 7pm</i> <i>Rec. Board 7pm</i>	22 <i>Council 6:30pm</i>	23	24 <i>Salute to Veterans At Public Library 6pm</i>  <i>Planning Board 6:30pm</i>	25	26 <b>Memorial Day Parade 10am</b> <i>Memorial Day Weekend Festival</i>
27 <i>Memorial Day Weekend Festival North End Park Clean Up</i>	28 <b>Memorial Day Boro Offices Closed</b>	29	30 <i>Sylvan Lake Commission 7:00pm</i>	31 <b>LEAF PICK UP ENDS</b>		

## LEAVES, BRUSH & YARD WASTE

### **Pick up:**

All brush and yard waste shall be placed at curbside by 7:00am of the day designated for collection. No brush or yard waste shall be placed at the curb side more than 72 hours prior to any scheduled collection. The Public Works Department starts picking up on the designated Monday and can take a couple days to complete the town. If the Monday falls on a holiday pick-up will be the next working day.

**Brush** and shrubs in bundles not more than 8 inches in diameter and 10 feet in length may be placed between the curb and sidewalk for collection. Brush will be collected from March through November. Brush will be collected on the second and fourth Mondays in the months of March through November. There will be NO brush collection from December 1st through February 28th.

**Yard Waste** will be collected on the brush collection dates. Yard waste materials to be collected by the Borough of Bradley Beach shall be drained of all liquid and then placed at curbside in an authorized yard waste container ONLY. No yard waste loose at the curb will be collected and a summons will be issued for failure to comply.

**Leaves** may be placed, loose or bagged, at curbside from April 1 through May 31 and from September 15 through December 1. Leaves shall not be closer than 10 feet to drain inlet. Leaves may be placed for collection only in authorized biodegradable leaf bags.

**All leaves, brush & yard waste placed at any curb must have originated at the property adjacent to the curb at which same are placed for collection.**

**GRASS CLIPPINGS WILL NOT** be collected by the Borough and SHALL NOT be placed at the curb at any time. In an event of a major storm Public Works will collect brush as needed. For special pick up contact Public Works. For further information please review Borough Ordinance Chapter 286 Article IV.

### Definitions:

**Authorized Yard Waste Container:** Trash or garbage container with approved label and drain holes to allow the water to drain.

The container shall not exceed 50lbs with contents.

**Yard Waste:** Hedge/yard trimmings and vegetation from flowers and gardens. NO GRASS CLIPPINGS.

**Authorized Leaf Bag:** Biodegradable leaf bag

### **BBO SAFETY**

**NEVER** cook inside a garage, a covered porch or under a canopy covered patio.

**NEVER** use a grill on a balcony.

As part of annual maintenance check grill for sticky valves and rust. Replace worn parts.

Always store cylinders outside, in the upright position and **NEVER** inside.

After fillup or exchange bring propane tanks home, valve closed and capped in a ventilated vehicle.

**NEVER** store, use or transport near high temperature.

On refills/exchanges have supplier check cylinder for damage, rust, dents or leaks. Keep the grill at least five feet from a combustible wall or fence.

**STAY SAFE THIS SUMMER, FOLLOW THESE SAFETY HINTS! Bon Appétit!**



# June 2012

Sun	Mon	Tue	Wed	Thu	Fri	Sat
					1	2
3 <i>Go Fish at Sylvan Lake 10:00am—12:00pm Reg. Starting 8:00am</i>	4	5  <i>Primary Election 6am—8pm</i>	6	7 <i>Municipal Court 9am  Joint Sub Committee 6:30pm</i>	8	9
10	11 <b>BRUSH PICK UP</b>	12  <i>Council 6:30pm</i>	13 <i>Fletcher Lake Commission 7pm</i>	14	15	16
17	18 <i>Shade Tree Commission 7pm Rec. Board 7pm</i>	19	20  <i>First Day of Summer</i>	21 <i>Municipal Court 9am  Zoning Board 6:30pm</i>	22	23
24	25 <b>Summer Camp Starts</b> <i>Library Board 5:15pm</i>	26  <i>Council 6:30pm</i>	27 <i>Sylvan Lake Commission 7:00pm</i>	28 <i>Planning Board 6:30pm</i>	29	30 <i>Summer Reading Launch At Public Library 11am</i>

**THE BRADLEY BEACH MUNICIPAL ALLIANCE TO PREVENT ALCHOLISM AND DRUG ABUSE**

in cooperation with the New Jersey Governor's Council on Alcoholism and Drug Abuse as well as the Monmouth County Division of Mental Health and Addiction Services, is a community based organization working to reduce the abuse of alcohol, tobacco, drugs and other substances in our community.

**HOTLINES**

**24-Hour Confidential Service Addictions Hotline of New Jersey**

[www.njdrughotline.org](http://www.njdrughotline.org)

1-800-238-2333

**Jersey Shore University Medical Center for Addiction Recovery, Neptune, New Jersey**

732-643-4368

**Poison Control Hotline**

[www.aapcc.org](http://www.aapcc.org)

1-800-222-1222

**BRADLEY BEACH FIRST AID SQUAD**

P.O. Box 421, Bradley Beach, New Jersey 07720

The Squad is always looking for volunteers to help serve our neighbors and the training is free. If you want more information on how you can help your community please contact us at 732-776-2997.

**BRADLEY BEACH FIRE DEPARTMENT**

815 Rear Main Street, Bradley Beach, N J 07720

The Bradley Beach Fire Department is always looking for volunteers. If you are interested in becoming a member, please go to Borough Hall and pick up an application.

The Fire Department also has a banquet hall available for any event. Please call 732-776-6169

May 2012 STEAK BAKE - DATE TO BE ANNOUNCED

**RECREATION DEPARTMENT**

ACTIVITIES OFFERED: Surfing Lessons, Sailing Instructions, Fishing Trip, Flag Football and Yogalates.

Open Recreation on school days for Bradley Beach Residents for Grades 5 & Up.

The Monmouth County Park System offers various morning programs on weekdays. ***Check Boro website.***

Dance Lessons available through A Chance to Dance. Please call 732-662-0028 for details.

December - Breakfast with Santa Date TBA

# July 2012

Sun	Mon	Tue	Wed	Thu	Fri	Sat
1	2	3	4 <i>Independence Day Boro Offices Closed</i>	5 <i>Joint Sub Committee 6:30pm</i>	6	7 <i>Fireworks at 9:30pm Jack Wright Memorial Swim 8am reg. &amp; 9:30am swim</i>
8	9 <b>BRUSH PICK UP</b>	10 <i>Council 6:30pm</i>	11 <i>Fletcher Lake Commission 7pm  Neighborhood Watch 7pm</i>	12 <i>Municipal Court 9am</i>	13	14 <i>Ice Cream Social at Public Library 11am Fireworks at 9:30pm (rain date)</i>
15	16 <i>Lifeguard Tournament Cliff Ave. Beach 6:15pm Rec. Board 7pm Shade Tree Commission 7pm</i>	17	18	19 <i>Zoning Board 6:30pm</i>	20	21
22	23	24 <i>Council 6:30pm</i>	25 <i>Sylvan Lake Commission 7:00pm</i>	26 <i>Municipal Court 9am  Planning Board 6:30pm</i>	27	28
29	30	31				

## **DEPARTMENT EMAIL ADDRESSES**

GENERAL MAIL BOX.....bradleyb@monmouth.com  
ADMINISTRATOR.....goreilly@monmouth.com  
MUNICIPAL CLERK/REGISTRAR.....masolinski@monmouth.com  
DEPUTY REGISTRAR/ADMIN ASSISTANT.....mwhile@monmouth.com  
CFO/TAX COLLECTOR.....jwilkins@monmouth.com  
ASSISTANT CFO/DEPUTY TAX COLLECTOR.....gailk@monmouth.com  
PUBLIC WORKS.....dpw-bc@monmouth.com  
PLANNING AND ZONING SECRETARY.....fsauta@monmouth.com  
FIRE MARSHAL/CODE ENFORCEMENT.....bb-firemarshal@monmouth.com  
CONSTRUCTION OFFICIAL.....bradleycode@monmouth.com  
ZONING OFFICIAL.....bb-zoningadmin@monmouth.com  
BUILDING SUBCODE OFFICIAL.....bb-buildingsubcode@monmouth.com  
BUILDING INSPECTOR.....bb-buildinginspector@monmouth.com

## **SYLVAN LAKE COMMISSION**

Meetings are held at the Avon Borough Hall Conference Room, 301 Main Street, Avon, New Jersey

Volunteers are always welcome. For more information, please call 732-774-3294

VIC'S PIZZA FUNDRAISER IN MAY DATE TBA

SPRING AND FALL CLEAN UPS DATE TBA

# August 2012

Sun	Mon	Tue	Wed	Thu	Fri	Sat
			1 <i>Property Tax and Sewer Payments Due</i>	2 <i>Joint Sub Committee 6:30pm</i>	3	4
5	6	7	8 <i>Fletcher Lake Commission 7pm</i>	9 <i>Municipal Court 9am</i>	10 <b>Summer Camp Ends</b>	11 <i>Summer Reading Finale At Public Library 11am</i>
12	13 <b>BRUSH PICK UP</b>	14 <i>Council 6:30pm</i>	15	16 <i>Zoning Board 6:30pm</i>	17 <i>Kids Race</i>	18 <i>5K Run</i>
19	20 <i>Shade Tree Commission 7pm Rec. Board 7pm</i>	21	22	23 <i>Municipal Court 9am  Planning Board 6:30pm</i>	24	25
26	27	28 <i>Council 6:30pm</i>	29 <i>Sylvan Lake Commission 7:00pm</i>	30	31	

## DEPARTMENT PHONE NUMBERS

### *EMERGENCY DIAL 911*

<b>Police</b> .....	732-775-6900
<b>Public Works</b> .....	732-776-2980
<b>Recreation</b> .....	732-776-2993 OR 732-776-2998
<b>Public Library</b> .....	732-776-2995
<b>Fire Department</b> .....	732-776-2402
<b>First Aid</b> .....	732-776-2988
<b>Bradley Beach Elementary School</b> .....	732-775-4413
<b>Borough Hall</b> .....	732-776-2999 Fax 732-775-1782
<b>Administrator</b> .....	Ext. 12
<b>Clerk/Registrar</b> .....	Ext. 11
<b>Deputy Registrar/Administrative Assistant</b> .....	Ext. 29
<b>Chief Financial Officer/ Tax Collector</b> .....	Ext. 18
<b>Assistant Chief Financial Officer/ Deputy Tax Collector</b> .....	Ext. 14
<b>Tax Assessor</b> .....	Ext. 19
<b>Municipal Court</b> .....	Ext. 22 Fax 732-776-5936
<b>Code/Construction Department</b> .....	Ext. 16 Fax 732-775-8168
<b>Planning and Zoning Secretary</b> .....	Ext. 17
<b>Tourism Secretary</b> .....	Ext. 17
<b>Drug Alliance</b> .....	Ext. 30

# September 2012

Sun	Mon	Tue	Wed	Thu	Fri	Sat
						1
2	3 <i>Labor Day</i> <i>Boro Offices Closed</i>	4	5	6 <i>Joint Sub Committee</i> 6:30pm	7	8 <i>Tour of the Town</i> <i>Garage Sale</i> 9am—3pm
9 <i>Tour of the Town</i> <i>Garage Sale</i> <i>(rain date)</i>	10 <b>BRUSH PICK UP</b>	11 <i>Council 6:30pm</i>	12 <i>Fletcher Lake</i> <i>Commission 7pm</i>  <i>Neighborhood Watch</i> 7pm	13 <i>Municipal Court 9am</i>	14	15 <b>LEAF PICK UP</b> <b>STARTS</b>
16	17 <i>Shade Tree</i> <i>Commission 7pm</i> <i>Rec. Board 7pm</i>	18	19	20 <i>Zoning Board</i> 6:30pm	21	22 <i>First Day of Fall</i>
23	24 <i>Library Board</i> 5:15pm	25 <i>Council 6:30pm</i>	26 <i>Sylvan Lake</i> <i>Commission 7:00pm</i>	27 <i>Municipal Court 9am</i>  <i>Planning Board</i> 6:30pm	28	29
30						



## **FIRE ESCAPE PLAN**

Draw a map of your home. Show all doors and windows.

Visit each room. Find two ways out.

All windows and doors should open easily. You should be able to use them to get outside.

Make sure your home has smoke alarms.

Push the test button to make sure each alarm is working.

Pick a meeting place outside. It should be in front of your home.

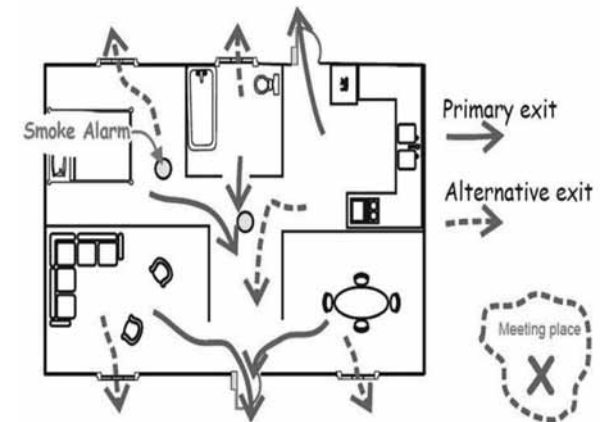
Everyone will meet at the meeting place.

Make sure your house or building number can be seen from the street.

Talk about your plan with everyone in your home.

Learn the emergency phone number for your fire department.

Practice your home fire escape drill twice a year!



## **SMOKE and CARBON MONOXIDE DETECTOR SAFETY**

### **WHAT TYPE DO I NEED?**

There are three types of smoke detectors PHOTO ELECTRIC, IONIZATION and DUAL SENSOR. Each alarm will respond differently depending on the nature of the fire. The Consumer Product Safety Commission and the US Fire Administration recommend the DUAL SENSOR for optimal response.

- There should be a minimum of one smoke detector on each floor outside the bedrooms
- Carbon Monoxide detector shall be installed within 10 feet of each bedroom
- The most important thing after you purchase and install your smoke alarms is to maintain them.
- A non-working alarm is about as effective as not having an alarm.
- Change your batteries at the annual time changes or whenever it “chirps” a low battery signal.
- Press the test button every so often to make sure it is working.



### **Carbon Monoxide FACTS:**

Carbon Monoxide is a toxic gas which can kill you even before you are aware it is in your home or apartment. At low levels it can mimic flu symptoms, including nausea and fatigue, headaches and dizziness, The effects are different based upon your general health, age and level of exposure.

Carbon Monoxide has many sources: gas fired appliances, wood burning stoves, fireplaces and your garaged motor vehicle. People do die, and hundreds are injured every year, due to carbon monoxide poisoning. Please be careful.

# October 2012

Sun	Mon	Tue	Wed	Thu	Fri	Sat
	1	2	3	4 <i>Joint Sub Committee</i> 6:30pm	5	6
7	8 <b>Columbus Day</b> <b>Boro Offices Closed</b>	9 <b>BRUSH PICK UP</b>  <i>Council 6:30pm</i>  <b>FIRE PREVENTION WEEK</b>	10 <i>Fletcher Lake</i> <i>Commission 7pm</i>	11 <i>Municipal Court 9am</i>	12	13
14	15  <i>Shade Tree</i> <i>Commission 7pm</i> <i>Rec. Board 7pm</i>	16	17	18 <i>Zoning Board 6:30pm</i>	19	20
21	22 <b>BRUSH PICK UP</b>  <i>Library Board</i> <i>5:15pm</i>	23  <i>Council 6:30pm</i>	24	25 <i>Municipal Court 9am</i>  <i>Halloween Party Public</i> <i>Library 6pm</i> <i>Planning Board 6:30pm</i>	26	27
28	29	30 <b>CURFEW 8:00PM—6:30AM</b>  <i>Halloween Parade</i> <i>Riley Park 6pm</i>	31 <i>Sylvan Lake</i> <i>Commission 7:00pm</i> <b>Halloween Parade</b> <b>(Rain date)</b>			

## **FLOOD INFORMATION AND SAFETY TIPS**

### **WHAT IS A FLOOD?**

Anywhere it rains, it can flood. A flood is a general and temporary condition where two or more acres of normally dry land or two or more properties are inundated by water or mudflow. Many conditions can result in a flood: hurricanes, overtopped levees, outdated or clogged drainage systems and rapid accumulation of rainfall. Just because you haven't experienced a flood in the past, doesn't mean you won't in the future. Flood risk is not just based on history, it's also based on a number of factors: rainfall, river-flow, tidal-surge data, topography, flood-control measures, and changes due to building and development.

Flood-hazard maps have been created by the federal government to show different degrees of risk for your community, which help determine the cost of flood insurance. The lower the degree of risk, the lower the flood insurance premium. Homeowners Insurance does not provide coverage for floods. A separate policy must be obtained. The federal government offers such policies. See below.

### **HOW CAN I TELL IF MY HOME IS IN THE FLOOD ZONE?**

The Borough of Bradley Beach is mainly not in the flood zone. Small sections of land near Sylvan Lake and Fletcher Lake are in the flood zone. To determine your zone, you can contact Borough Hall, or go to the Borough website [www.bradleybeachonline.com](http://www.bradleybeachonline.com) and click the link to FEMA or onto the website: [www.fema.gov](http://www.fema.gov) and click on maps, then flood map online and enter address.

### **IF FLOOD INSURANCE IS NEEDED, PLEASE SEE THE BELOW INFORMATION:**

The National Flood Insurance Program (NFIP) is administered by the Federal Emergency Management Agency (FEMA), which works closely with nearly 90 private insurance companies to offer flood insurance to property owners and renters. In order to qualify for flood insurance, a community must join the NFIP and agree to enforce sound floodplain management standards. The Borough of Bradley Beach is a NFIP member. The NFIP, a federal program, offers flood insurance, which can be purchased through property and casualty insurance agents. Rates are set and do not differ from company to company or agent to agent. These rates depend on many factors, which include the date and type of construction of your home, along with your buildings level of risk.

**DRIVING FLOOD FACTS:** The following are important points to remember when driving in flood conditions:

- Six inches of water will reach the bottom of most passenger cars causing loss of control and possible stalling.
- A foot of water will float many vehicles.
- Two feet of rushing water can carry away most vehicles including sport utility vehicles (SUV's) and pick-ups.

**AFTER A FLOOD:** The following are guidelines for the period following a flood:

- Listen for news reports to learn whether the community's water supply is safe to drink.
- Avoid floodwaters; water may be contaminated by oil, gasoline, or raw sewage. Water may also be electrically charged from underground or downed lines.
- Be aware of areas where floodwaters have receded. Roads may have weakened and could collapse under the weight of a car.
- Stay away from downed power lines, and report them to the power company.
- Return home only when authorities indicate it is safe.
- Use extreme caution when entering buildings; there may be hidden damage, particularly in foundations.
- Service damaged septic tanks, cesspools, pits, and leaching systems as soon as possible. Damaged sewage systems are serious health hazards.
- Clean and disinfect everything that got wet. Mud left from floodwater can contain sewage and chemicals.

**FOR ADDITIONAL INFORMATION SEE THE INFORMATION POSTED ABOVE DECEMBER**

# November 2012

Sun	Mon	Tue	Wed	Thu	Fri	Sat
				1 <b>CURFEW</b> 8:00PM-6:30AM <i>Property Tax and Sewer Payments Joint Sub Committee 6:30pm</i>	2	3
4 <i>Day Light Saving Time Ends</i>	5	6 <i>General Election Including Municipal Election Polls Open 6am—8pm</i>	7	8 <i>Municipal Court 9am</i>	9	10 <i>BBFD Ladies Auxiliary Holiday Shop 9am—3pm</i>
11	12 <b>Veterans Day</b> <b>Boro Offices Closed</b>	13 <b>BRUSH PICK UP</b>	14 <i>Fletcher Lake Commission 7pm</i>  <i>Neighborhood Watch 7pm</i>	15 <i>Zoning Board 6:30pm</i>	16	17
18	19 <i>Shade Tree Commission 7pm Rec. Board 7pm</i>	20	21	22 <b>Thanksgiving Holiday</b> <b>Boro Offices Closed</b>  <b>NO TRASH COLLECTION</b>	23	24
25 <i>Tree Lighting Ceremony 4pm</i>	26 <i>Library Board 5:15pm</i>	27 <i>Council 6:30pm</i>	28 <i>Sylvan Lake Commission 7:00 pm</i>	29	30	

## **EMERGENCY SITUATIONS:**

*EXAMPLES: FLOODS, HURRICANES, BLIZZARDS, ETC.*

Listen to the radio stations WJLK (94.3), WOBN (92.7) and WRAT (95.9) or television for information. Residents will also be alerted with the Shore Area Emergency Notification System. Residents may sign up at [www.bradleybeachonline.com](http://www.bradleybeachonline.com) and click on the link for the [www.ready.gov](http://www.ready.gov).

Be aware that flash flooding can occur. If there is any possibility of a flash flood, move immediately to higher ground. Do not wait for instructions to move. Be aware of streams, drainage channels, canyons and other areas known to flood suddenly. Flash floods can occur in these areas with or without such typical warnings as rain clouds or heavy rain.

If you must prepare to evacuate, you should do the following:

Secure your home. If you have time, bring in any moveable items. Move essential items to an upper floor. Turn off utilities including gas and propane at the main switches or valves if instructed to do so. And have all tools ready in the event that they need to be shut off. Disconnect electrical appliances. Do not touch electrical equipment if you are wet or standing in water

If you have to leave your home, remember these evacuation tips:

Do not walk through moving water. Six inches of moving water can make you fall. If you have to walk in water, walk where the water is not moving. Use a stick to check the firmness of the ground in front of you. Do not drive in flooded areas. If floodwaters rise around your car, abandon the car and move to higher ground if you can do so safely. You and the vehicle can be quickly swept away.

Prepare an Emergency Supply Kit which should include items such as water, non-perishable food, battery powered radio, flashlight and extra batteries, any medication immediately needed and sanitary items for your family. You may want to prepare a portable kit to keep in your car in case you are told to evacuate. sanitary items for your family. You may want to prepare a portable kit to keep in your car

Make an Family Emergency Plan. It is important to know how you will contact family members in case of emergency or evacuations and how you will get back together.

Be informed. The Bradley Beach Office of Emergency Management will continue to update you on the progress of a severe weather event by means of Reverse 911 system or visit the [www.ready.gov](http://www.ready.gov) to obtain further information on emergency Supply Kits and Making Family Emergency Plans.

## **FLOOD SAFETY TIPS BEFORE A FLOOD**

To avoid flood damage, you should:

Avoid building in a floodprone area unless you elevate and reinforce your home.

Elevate the furnace, water heater, and electric panel if susceptible to flooding.

Install “check valves” in sewer traps to prevent floodwater from backing up into the drains of your home.

Contact community officials to find out if they are planning to construct barriers to stop floodwater from entering the homes in your area.

Seal the walls in your basement with waterproofing compounds to avoid seepage.

# December 2012

Sun	Mon	Tue	Wed	Thu	Fri	Sat
						1 <i>LEAF PICK UP ENDS</i>
2	3	4	5	6 <i>Municipal Court 9am  Joint Sub Committee 6:30pm</i>	7	8
9 <i>Menorah Lighting</i>	10	11 <i>Council 6:30pm</i>	12 <i>Fletcher Lake Commission 7pm</i>	13	14	15
16	17 <i>Shade Tree Commission 7pm Rec. Board 7pm Library Board 5:15pm</i>	18	19	20 <i>Holiday Party at Public Library 6pm  Zoning Board 6:30pm</i>	21 <i>First Day of Winter</i>	22
23	24 <i>Boro Offices Closing at 1pm</i>	25 <i>Christmas Day Boro Offices Closed  NO TRASH COLLECTION</i>	26 <i>Sylvan Lake Commission 7:00pm</i>	27 <i>Planning Board 6:30pm</i>	28	29
30	31					

**BOROUGH OF BRADLEY BEACH  
MONMOUTH COUNTY, NEW JERSEY**

**MAYOR AND COUNCIL**

Mayor Julie Schreck  
Councilman Salvatore Galassetti  
Councilman Harold Cotler  
Councilman Patrick D'Angelo  
Councilman Gary Engelstad

**ADMINISTRATION**

Gail O'Reilly, Borough Administrator  
Mary Ann Solinski, Municipal Clerk and Registrar of Vital Statistics  
Joyce M. Wilkins, Chief Financial Officer and Tax Collector  
Gail O. Krzyzyczuk, Assistant Chief Financial Officer and Deputy Tax Collector  
Michele A. Whille, Deputy Registrar of Vital Statistics

**MUNICIPAL COURT**

Richard B. Thompson, Judge  
Kelly Barrett, Certified Court Administrator  
Christine Giglio, Deputy Court Administrator

**BRADLEY BEACH POLICE DEPARTMENT**

Chief Leonard A. Guida

**DEPARTMENT OF COMMUNITY DEVELOPMENT**

Bryant Curry, Director, Fire Marshal and Code Officer  
Ken Triano, Construction Official

[www.bradleybeachonline.com](http://www.bradleybeachonline.com)

## SNOW INFORMATION

### **PARKING DURING SNOW EMERGENCIES**

If possible, all vehicles should find off street parked during Snow Emergency.

### **REGULATIONS FOR SNOW PLOWING - ALTERNATE SIDE OF THE STREET PARKING**

If your street runs EAST TO WEST: During and after it snows, no parking on the South Side of the street until the snow is plowed off the South Side. Then no parking on the North Side of the street until the snow is plowed off the North Side. If the street runs NORTH to SOUTH: During and after it snows, no parking on the East Side of the street until the snow is plowed off the East Side. Then no parking on the West Side of the street until the snow is plowed off the West Side.

### **SNOW REMOVAL**

**Snow removal:** sidewalks and parking lots. Snow and ice shall be removed from sidewalks and private parking lots within 24 hours after cessation of precipitation.

**Depositing of snow or ice into the streets is prohibited.** No person or other entity shall throw, place or deposit any snow or ice into or on any street in the Borough, and no owner, tenant or occupant shall cause or allow such throwing, placing or depositing or any snow or ice to remain in the street, being the intent and purpose of this provision to prohibit all such persons and entities from throwing, placing or depositing snow or ice which accumulated on the private property of adjoining sidewalks into the streets of the Borough.

***FIRE HYDRANT BY YOUR HOME? PLEASE HELP AND CLEAR THE HYDRANT FOR EMERGENCIES***

### **REMINDER**

**DOG LICENSE:** Dog licenses are due annually with a fee of \$8.20 for spayed or neutered animals or \$11.20 for non-spayed or neutered animals.

Licensing must be obtained before March 1st as there will be a \$10.00 late fee. A rabies certificate must be current to obtain a license and it must be current with a minimum of 10 months of the licensing year. The Borough's licensing year is January 1st through December 31st.

### **ARTS AT THE BEACH**

The Bradley Beach Arts Association

#### **2012 Upcoming Events — Spring**

Three free workshops and contests for grade school students (Literary and Visual Arts)

Workshops Saturday Feb 11, 2012 & Contest Award Ceremony March 16, 2012

1. Essay, poetry and letter writing; 2. Poster painting for display in Main Street store fronts; 3. Photography

**Adult free workshops** (Literary and Performing Arts); Poetry and Shakespeare Play Readings TBA

**Summer** (Literary, Visual and Performing Arts); **Check for dates on website: [artsatthebeach.org](http://artsatthebeach.org)**

For information e-mail: Julia Sandra Rand, Chair: [artsatthebeach@aol.com](mailto:artsatthebeach@aol.com)

Inaugural Season 2011; Founder, Mayor Julie Schreck

***Please read all pages, as they contain information that may be useful to you now. Happy New Year!***

## 286-34 BULK STICKER FEES FOR COLLECTION OF BULK GOODS

The following schedule of the number of fee stickers required for each bulk item is based on four fee stickers for 25 pounds of weight. The weight of items used in this schedule are estimated weights formulated by the Department of Public Works. If any item not on this schedule is being placed for collection, the person placing the item should estimate the total weight to the item (in pounds) and divide the figure by 25 to arrive at the number of fee stickers required for that item. Any person unable to estimate the weight of any item may call the Department of Public Works for an estimate.

**Below is a list of the most common items put at curbside for disposal. NOTE: Items weighing less than 25 pounds require four stickers, provided that items weighing more than 25 pounds may be combined and placed together in a bag as long as the bag does not weigh more than 25 pounds. Four stickers must then be placed on the outside of the bag.**

ITEM	NUMBER OF REQUIRED STICKERS
Straight Back Chair	4
Dining Room Chair	6
Stuffed Chair	6
End Tables & Nightstands	4
Sofa	10
Mattress	8
Sofa Bed	20
Box Spring	6
Dresser or Chest	8
Refrigerator (clean of any chemicals)	30
Air Conditioner less than 5000BTU (clean of any chemicals)	15
Air Conditioner 5000 BTU and over (clean of any chemicals)	30
Freezer (clean of any chemicals)	30
Any unit containing Chlorofluorocarbons (with the chemicals removed)	30
Washing Machine	30
Dryer	20
Water Heater (clean of any chemicals)	20
Kitchen Cabinet	10
Stove	30
Dishwasher	30
10 x 12 Carpet	10

# The Borough has now has Single Stream Recycling!!!! Starting Monday, January 9<sup>th</sup>.

## 2012 TRASH AND RECYCLING INFORMATION

### RECYCLING PICK UP IS EVERY MONDAY THROUGHOUT THE BOROUGH.

Recycling will now be easier! You will throw all your recyclables into one can for more curb-side collection. Since recycled items are cleaned, processed and re-purposed as new products by participating you will help save the planet as well as save thousands in landfill fees. Below are lists of what you can and cannot put in the can.

#### **Acceptable Items:**

Newspaper, office paper,  
Junk mail, envelopes  
Magazines  
Flat corrugated cardboard  
Cereal boxes  
Glass bottles and jars  
Metal containers  
Metal beverage containers  
Plastic water & soda bottles  
Plastic milk bottles  
Shampoo, detergent bottles

*Loose and mixed in one can.*

*Nothing tied (newspaper/cardboard).*

*Not in plastic trash bags.*

#### **Not Acceptable Items:**

Food, coffee grounds, etc.  
Plastic bags, plastic wrap  
Shopping bags of any kind  
Wax-covered boxes  
Paper plates, Pizza boxes  
Plastic utensils  
Deli containers, Styrofoam  
Window glass, ceramics, dishes  
Wire, wire hangers  
Christmas lights  
Diapers

*These items go in your*

*your regular "kitchen trash."*

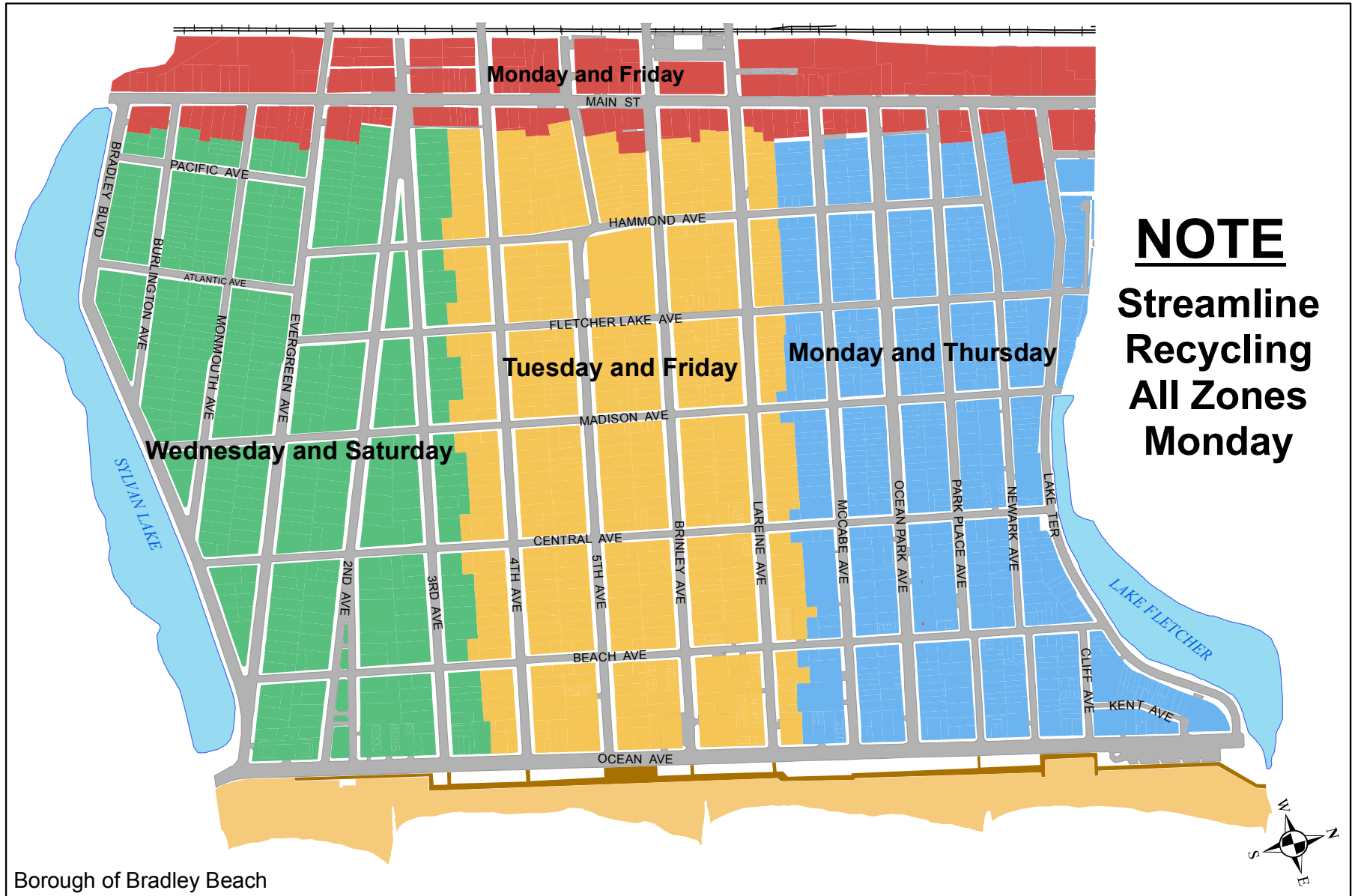
**DeLisa Demolition and Disposal**

**732-988-2525**

**Trash and Recycling Company**

**Trash and Recycling will not be picked up on Thanksgiving, Christmas Day and New Years Day. Please put it out for pick up on the next regular collection day. Please be aware that during a State of Emergency or a Severe Snow Storm Trash and Recycling will not be picked up until the next regular collection day.**

# Trash Collection Zones



Borough of Bradley Beach

## Days of the Week for Trash Collection

- Monday and Friday  
*Commercial & Residential*
- Monday and Thursday
- Tuesday and Friday
- Wednesday and Saturday

## TRASH AND RECYCLING INFORMATION

Richard Bianchi, Jr. - Supervisor  
Biagio Cofone - Assistant Supervisor  
732-776-2980

Please take recycling to the Neptune Public Works Yard, 2201 Heck Avenue, Neptune, New Jersey (Right off of Neptune Boulevard)  
Proper Identification is required. (Driver's License or Utility Bill)

**RECYCLING CENTER IS FOR RECYCLING ONLY.** Dropping off Paints, Propane Tanks, Trash or Bulk Trash items are not allowed and will be considered **illegal dumping which is punishable by Law.** Apartments, condominiums and businesses (including restaurants) - only 32 gallon containers will be accepted. It is the property owner's responsibility to notify all tenants of all regulations and ordinances.

### RECYCLING

**NEWSPAPER:** #1 Newspapers sold at newsstands must be tied in bundles and are not to exceed 30lbs. (No paper or plastic bags will be accepted.)

**MIXED PAPER:** High Grade (computer paper, printouts, tab cards and white paper) should be tied in bundles and placed alongside your newspapers. Bundles are are not to exceed 30lbs.

**CO-MINGLED:** Aluminum cans, tin cans, plastic and glass bottles (all colors) are to be placed into an open sturdy re-useable container **not** to exceed 32 gallons with holes in the bottom and put to the curb for pick-up on assigned days. **ALL** cans, bottles and plastics should be washed to control bugs and odors. Motor oil containers, mirrors, bulbs, dish ceramics or window glass, plastic bags and broken bottles or any other type of broken glass will **NOT** be accepted.

**CARDBOARD:** Corrugated boxes (un-waxed) must be collapsed, folded and tied securely. **Bundles must be 2' X 2' maximum size and not to exceed 30lbs.**

### COMPUTER, ELECTRONIC AND HAZARDOUS WASTE INFORMATION

Computer and Electronic items should be brought to the Monmouth County Reclamation Center, 6000 Asbury Avenue, Tinton Falls, New Jersey, Gate A, Monday - Friday 7:30am - 3:00pm and Saturday 7:30am - 2:00pm.

**ITEMS ACCEPTED:** Computer cases, CPU's, Keyboards, Mice, Monitors, Scanners, Printers, Cables, Laptops, Peripherals, TV's (42" and smaller), Radios, Telephones, Cameras, VCR's, DVD players, Stereo Components.

**ITEMS NOT ACCEPTED:** TV's (larger than 42") and Wood Console TVs. This is limited to Residents, small businesses and institutions. One pickup truck load. For more information please call: 732-431-7460.

**BATTERIES:** Regular trash & the Monmouth County Hazardous Waste Facility no longer accept batteries.

**HAZARDOUS WASTE:** Paints, pesticides, fertilizers, motor oil, antifreeze, pool chemicals, propane tanks, gasoline and herbicides can be brought to the Monmouth County Permanent Household Hazardous Waster Facility at 3161 Shafto Road, Tinton Falls, New Jersey For an appointment please call 732-922-2234.

### BULK ITEMS

Bulk stickers are required for items that are **not considered regular household garbage or building material.**

These stickers can be obtained at Borough Hall. Bulk trash shall only be placed at the curb 12 hours before regulated pickup days.

**ALL TRASH MUST BE IN A TRASH CAN WITH A LID**  
**ANYONE WITH RECYCLING ITEMS IN THEIR TRASH WILL BE SUBJECT TO A SUMMONS**